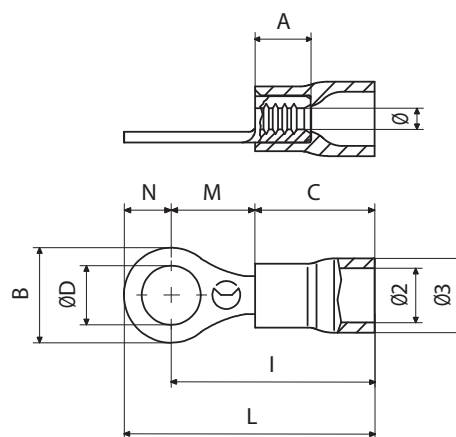


Cable lugs > Pre-insulated > Cable terminals

Type: RF-M7

Family: F-M



RING TERMINAL, PRE-INSULATED WITH PVC, RED, FOR COPPER CONDUCTORS, SCREW 7MM SECTION 0,25-1,5 MMQ

Technical information

Maximum operating temperature	75 °C
Minimum operating temperature	-20 °C
Cable section range	0.25÷1.5 mm ²
Colour of jacket	Red
Cable stripping length	4.6 mm
Number of tab holes	1
Presence of reinforcement ring	No
Presence of sight hole	No
Easy entry	Yes
Anti-vibration	No
Type	single
Insulation type	partial

Weight and dimensions

Eyelet diameter (ØD)	7.2 mm
Bow external diameter (Ø3)	5.5 mm
Barrel internal diameter (Ø)	1.8 mm
Bow internal diameter (Ø2)	4 mm
Screw diameter	M7
Distance between center of tab hole - external barrel side (I)	12.3 mm
Distance between center of tab hole - external eyelet side (N)	4.7 mm
Distance between center of tab hole - point of transition (M)	8.1 mm

Weight and dimensions

Hole spacing (E)	0 mm
Patella width (B)	9.4 mm
Barrel length (A)	4.2 mm
Sleeve length (C)	10.1 mm
Total connector length (L)	22.8 mm

Material composition and treatments

Halogen-free	No
Insulating jacket material	Polyvinylchloride PVC
Conductor body material	Electrolytic copper with purity above 99,95%
Annealed	Yes

Certifications and approvals

Marks	UL (cULus)
UL 94 self-extinguishing class	V0
Reference standards	UL 486A-486B;UL 486C
REACH	Yes
ROHS	Yes

Logistics

Minimum packaging unit	100
Standard packaging unit	2500