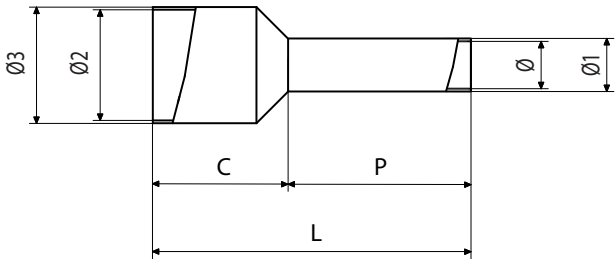
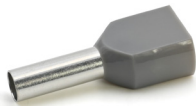


Cable lugs > Pre-insulated > End sleeves

Type: PKT412

Family: PKT



TWIN END SLEEVE, PRE-INSULATED WITH PA6, GREY, FOR FLEXIBLE COPPER CONDUCTORS, SECTION 2X4MMQ P=12MM

Technical information	
Maximum operating temperature	105 °C
Minimum operating temperature	-20 °C
Cable section range	4÷4 mm²
Colour of jacket	Grey
Cable stripping length	17 mm
Number of cables that can be introduced	2
Easy entry	Yes
Dielectric strength of the insulating jacket	16.5 kV/mm
Type	single

Weight and dimensions	
Bow internal diameter (Ø2)	4.9 mm
Tube external diameter (Ø3)	4.2 mm
Tube total length (L)	23 mm
Internal width of sleeve	8.8 mm
Tube body length (P)	12 mm
Sleeve length (C)	9 mm

Material composition and treatments	
Halogen-free	Yes
Insulating jacket material	Polyamide
Conductor body material	Electrolytic copper with purity above 99,95%
Annealed	Yes

Certifications and approvals	
Marks	UL (cULus)
Reference standards	DIN 46228/4
REACH	Yes
ROHS	Yes

Logistics	
Minimum packaging unit	100
Standard packaging unit	1000