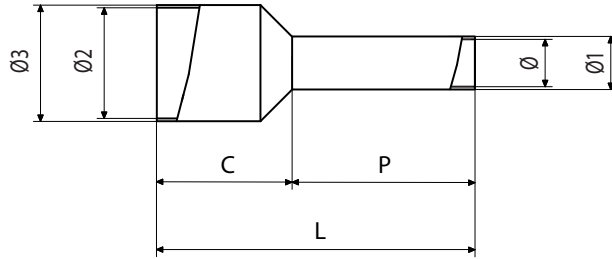


Cable lugs > Pre-insulated > End sleeves

Type: PKD1612

Family: PKD



END SLEEVE, PRE-INSULATED WITH PA6, BLUE, FOR FLEXIBLE COPPER CONDUCTORS, SECTION 16MMQ P=12MM

Technical information

Maximum operating temperature	105 °C
Minimum operating temperature	-20 °C
Cable section range	16±16 mm ²
Colour of jacket	Blue
Compatible cable class	5 class
Cable stripping length	12 mm
Easy entry	Yes
Dielectric strength of the insulating jacket	16.5 kV/mm
Type	single

Weight and dimensions

Bow external diameter (Ø3)	9.6 mm
Bow internal diameter (Ø2)	8.8 mm
Tube external diameter (Ø3)	6.2 mm
Tube total length (L)	24 mm
Tube body length (P)	12 mm
Sleeve length (C)	12 mm

Material composition and treatments

Halogen-free	Yes
Insulating jacket material	Polyamide
Conductor body material	Electrolytic copper with purity above 99,95%
Annealed	Yes

Certifications and approvals

Marks	UL (cULus)
Reference standards	DIN 46228/4
REACH	Yes
ROHS	Yes

Logistics

Minimum packaging unit	100
Standard packaging unit	800