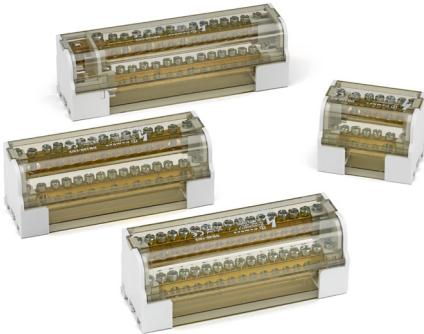


Cable lugs > Terminal blocks and distribution blocks > Power distribution blocks

Type: DB100-13/2



DBLOCK SERIES TWO-POLE DISTRIBUTION BLOCK, DIRECT CLAMPING, 100A 15 WAY ENTRANCE SECTION 25MMQ

Technical information	
Number of ways	13
Rated impulse voltage Uimp	500 V
Rated peak withstand current IPK	20 kA
Rated short-time withstand current ICW	4.5 kA
Operating current	100 A
Input connection capacity	2x10÷25 mm² R/F
Output connection capacity	6x(1.5÷4 mm² R; 0.75÷4 mm² F); 7x(2.5÷6 mm² R; 1.5÷6 mm² F)
Number of poles	2
Clamping type	direct
Captive screw	Yes
Torque of the clamping element	0.75÷4 mm² F: 1.5 Nm; 1.5÷4 mm² R: 1.5 Nm; 1.5÷6 mm² F: 3 Nm; 2.5÷6 mm² R: 3 Nm; 10÷25 mm² R/F: 3 Nm
Easy insertion input	Yes
Cover color	Transparent
Insulated body color	Grey
Attachment for DIN rail	Yes

Weight and dimensions	
Geometry of the clamping element	slotted screw
Number and diameter of input holes	2x8.5 mm
Number and diameter of output holes	6x4.5 mm; 7x5.5 mm

Weight and dimensions	
Horizontal pitch between the sheet elements	2x8.5 mm

Material composition and treatments	
Conductor body material	brass
Insulated body material	Polyamide PA6.6
Cover material	Polycarbonate
Clamping element material	Zinc plated steel
Halogen free	Yes
Surface treatment of the conductor body	electrolytic tin plating
Surface treatment of the clamping element	Zinc plating

Certifications and approvals	
Marks	CE; UKCA
REACH	Yes
ROHS	Yes
Reference standard	EN 60947-7-1
Self-extinguishing fire class according to UL 94	V0

Logistics	
Minimum packing unit	1
Standard packing unit	1