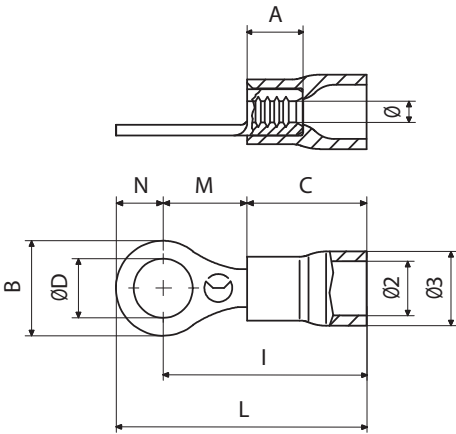


Cable lugs > Pre-insulated > Cable terminals

Type: BF-M4

Family: F-M



RING TERMINAL, PRE-INSULATED WITH PVC, BLUE, FOR COPPER CONDUCTORS, SCREW 4MM

SECTION 1,5-2,5 MMQ

Technical information	
Maximum operating temperature	75 °C
Minimum operating temperature	-20 °C
Cable section range	1.5÷2.5 mm²
Colour of jacket	Blue
Cable stripping length	4.6 mm
Number of tab holes	1
Presence of reinforcement ring	No
Presence of sight hole	No
Easy entry	Yes
Anti-vibration	No
Type	single
Insulation type	partial

Weight and dimensions	
Eyelet diameter (ØD)	4.3 mm
Bow external diameter (Ø3)	6.4 mm
Barrel internal diameter (Ø)	2.4 mm
Bow internal diameter (Ø2)	4.9 mm
Screw diameter	M4
Distance between center of tab hole - external barrel side (I)	10.7 mm
Distance between center of tab hole - external eyelet side (N)	4 mm
Distance between center of tab hole - point of transition (M)	6.5 mm

Weight and dimensions	
Hole spacing (E)	0 mm
Patella width (B)	8 mm
Barrel length (A)	4.2 mm
Sleeve length (C)	10.1 mm
Total connector length (L)	20.5 mm

Material composition and treatments	
Halogen-free	No
Insulating jacket material	Polyvinylchloride PVC
Conductor body material	Electrolytic copper with purity above 99,95%
Annealed	Yes

Certifications and approvals	
Marks	UL (cULus)
UL 94 self-extinguishing class	V0
Reference standards	UL 486A-486B;UL 486C
REACH	Yes
ROHS	Yes

Logistics	
Minimum packaging unit	100
Standard packaging unit	2500