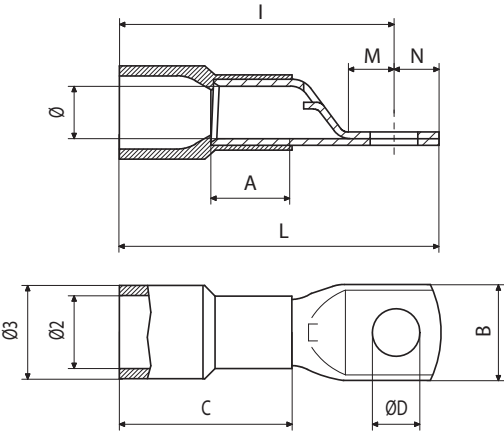


Cable lugs > Pre-insulated > Tube terminals

Type: ANE5-M8

Family: ANE-M



RING TERMINAL, PRE-INSULATED WITH PA6.6, FOR COPPER CONDUCTORS, SCREW 8MM  
SECTION 25MMQ

Technical information	
Maximum operating temperature	115 °C
Minimum operating temperature	-20 °C
Cable section range	25÷25 mm²
Colour of jacket	Black
Compatible cable class	5 and 6 class, CEI 20-29
Cable stripping length	14 mm
Number of tab holes	1
Presence of reinforcement ring	No
Presence of sight hole	Yes
Easy entry	Yes
Anti-vibration	No
Type	single
Insulation type	partial

Weight and dimensions	
Eyelet diameter (ØD)	8.4 mm
Bow external diameter (Ø3)	13 mm
Barrel internal diameter (Ø)	7 mm
Bow internal diameter (Ø2)	11.1 mm
Screw diameter	M8
Distance between center of tab hole - external barrel side (I)	28 mm
Distance between center of tab hole - external eyelet side (N)	8 mm

Weight and dimensions	
Distance between center of tab hole - point of transition (M)	9 mm
Hole spacing (E)	0 mm
Patella width (B)	15 mm
Barrel length (A)	10.5 mm
Sleeve length (C)	25 mm
Total connector length (L)	49 mm

Material composition and treatments	
Halogen-free	No
Insulating jacket material	Polyamide PA6.6
Conductor body material	Electrolytic copper with purity above 99,95%
Annealed	Yes

Certifications and approvals	
Marks	UL (cULus)
REACH	Yes
ROHS	Yes

Logistics	
Minimum packaging unit	100
Standard packaging unit	300