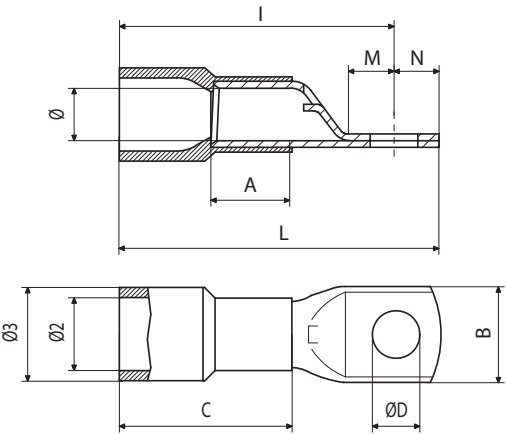


Cable lugs > Pre-insulated > Tube terminals

Type: ANE30-M20

Family: ANE-M



RING TERMINAL, PRE-INSULATED WITH PA6.6, FOR COPPER CONDUCTORS, SCREW 20MM SECTION 150MMQ

| Technical information | |
|--------------------------------|--------------------------|
| Maximum operating temperature | 115 °C |
| Minimum operating temperature | -20 °C |
| Cable section range | 150÷150 mm² |
| Colour of jacket | Black |
| Compatible cable class | 5 and 6 class, CEI 20-29 |
| Cable stripping length | 35 mm |
| Number of tab holes | 1 |
| Presence of reinforcement ring | No |
| Presence of sight hole | Yes |
| Easy entry | Yes |
| Anti-vibration | No |
| Type | single |
| Insulation type | partial |

| Weight and dimensions | |
|----------------------------------------------------------------|---------|
| Eyelet diameter (ØD) | 21 mm |
| Bow external diameter (Ø3) | 26.6 mm |
| Barrel internal diameter (Ø) | 16.7 mm |
| Bow internal diameter (Ø2) | 23 mm |
| Screw diameter | M20 |
| Distance between center of tab hole - external barrel side (I) | 67 mm |
| Distance between center of tab hole - external eyelet side (N) | 20 mm |

| Weight and dimensions | |
|---------------------------------------------------------------|---------|
| Distance between center of tab hole - point of transition (M) | 22 mm |
| Hole spacing (E) | 0 mm |
| Patella width (B) | 31.5 mm |
| Barrel length (A) | 26.5 mm |
| Sleeve length (C) | 52.2 mm |
| Total connector length (L) | 113 mm |

| Material composition and treatments | |
|-------------------------------------|----------------------------------------------|
| Halogen-free | No |
| Insulating jacket material | Polyamide PA6.6 |
| Conductor body material | Electrolytic copper with purity above 99,95% |
| Annealed | Yes |

| Certifications and approvals | |
|------------------------------|------------|
| Marks | UL (cULus) |
| REACH | Yes |
| ROHS | Yes |

| Logistics | |
|-------------------------|----|
| Minimum packaging unit | 15 |
| Standard packaging unit | 30 |