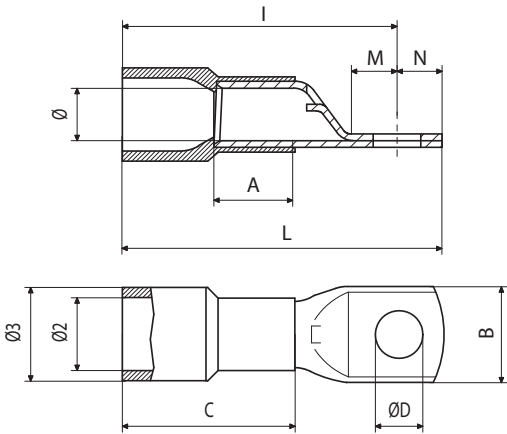


Cable lugs > Pre-insulated > Tube terminals

Type: ANE30-M14

Family: ANE-M



RING TERMINAL, PRE-INSULATED WITH PA6.6, FOR COPPER CONDUCTORS, SCREW 14MM
SECTION 150MMQ

Technical information	
Maximum operating temperature	115 °C
Minimum operating temperature	-20 °C
Cable section range	150÷150 mm²
Colour of jacket	Black
Compatible cable class	5 and 6 class, CEI 20-29
Cable stripping length	35 mm
Number of tab holes	1
Presence of reinforcement ring	No
Presence of sight hole	Yes
Easy entry	Yes
Anti-vibration	No
Type	single
Insulation type	partial

Weight and dimensions	
Eyelet diameter (ØD)	15 mm
Bow external diameter (Ø3)	26.6 mm
Barrel internal diameter (Ø)	16.7 mm
Bow internal diameter (Ø2)	23 mm
Screw diameter	M14
Distance between center of tab hole - external barrel side (I)	63 mm
Distance between center of tab hole - external eyelet side (N)	16 mm

Weight and dimensions	
Distance between center of tab hole - point of transition (M)	18 mm
Hole spacing (E)	0 mm
Patella width (B)	31.5 mm
Barrel length (A)	26.5 mm
Sleeve length (C)	52.2 mm
Total connector length (L)	105 mm

Material composition and treatments	
Halogen-free	No
Insulating jacket material	Polyamide PA6.6
Conductor body material	Electrolytic copper with purity above 99,95%
Annealed	Yes

Certifications and approvals	
Marks	UL (cULus)
REACH	Yes
ROHS	Yes

Logistics	
Minimum packaging unit	15
Standard packaging unit	30